



# CALIPSO

sedia regista | director chair  
Regiestuhl

## IT

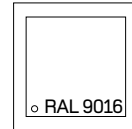
- telaio in alluminio anodizzato
- bulloneria inox
- telo "textilene" in tessuto di PVC

## EN

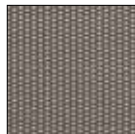
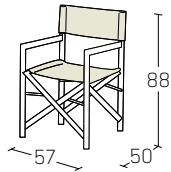
- anodized aluminium frame
- nuts and bolts of stainless steel
- "textilene" canvas of PVC - fabric

## DE

- Rahmen aus eloxiertem Aluminium
- Edelstahlbolzen
- Bespannung aus PVC "Textilene"



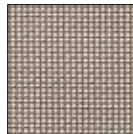
laccato bianco  
lacquered in white  
weißlackiert



thick  
fabric



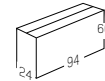
open-work  
fabric



TRO fabric



kg. 5,90



packing - volume

pz. 1

m<sup>3</sup> 0,14



packing - volume

pz. 20

m<sup>3</sup> 1,45

art. CL01